



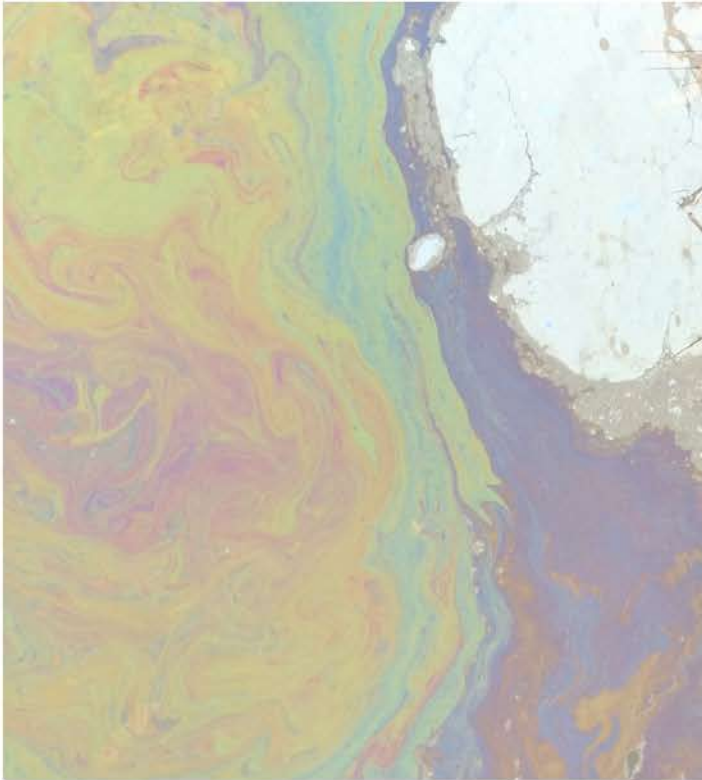
**Environmental
Management
Services**

Inadequate Interceptor Specification Case Study

Summary

Interceptors are a key defence to preventing oil pollution but unless they are adequately specified they may not be fit for purpose. There are numerous factors to consider when choosing the necessary interceptor for your site including size, class and location of install.

This case study summarised from an article on the Environment Agency's website gives an example of where installing an inadequate interceptor caused a major pollution incident.



The surface water drain led to part of the River Orwell within 1km of numerous conservation designations for birds and wetland including SPA (Special Protection Area), RAMSAR (protected conservation site) and SSSI (Site of Special Scientific Interest).

The company compounded its error by failing to notify the Environment Agency on the day of the spill.

After the hearing Environment Agency officer Adrian Sherman said:

“The effect on the river was serious but could have been avoided altogether. The port authority acted quickly and because of this the oil was contained to prevent it from affecting downstream protected habitats.”

“The effect on the river was serious but could have been avoided altogether”

Adrian Sherman – Environment Agency

Oil from a waste treatment plant in Ipswich polluted four miles of the river Orwell and contaminated twelve swans, one of which died. The company were:

- Fined a total of £30,000
- Liable to foot the bill for £169,000 worth of clean-up costs.
- Ordered to pay full costs of £6,569 as well as a victim surcharge of £120.

In the design stage of the site the company had failed to identify the maximum possible water flow to the interceptor during a high rain fall event, this led to an unsuitable interceptor being installed.

During a high rain fall event the interceptor tank became overwhelmed by the heavy rain and the liquid waste being stored overtopped out of the manhole covers, this ran across the concrete yard and into a surface water drain.

