



**Environmental  
Management  
Services**

## **Separator Compliance Assessments Case Studies**

---

### **Summary**

During our separator compliance assessments we inspect the separators to ensure they are fully functioning and assess the catchment area to ensure the separator is fit for purpose.

The following case studies give examples where separators have not been fit for purpose either due to problems with the system or due to inadequate systems being installed.





## Case Study 1

### Specification: Adequate Functionality: Impaired

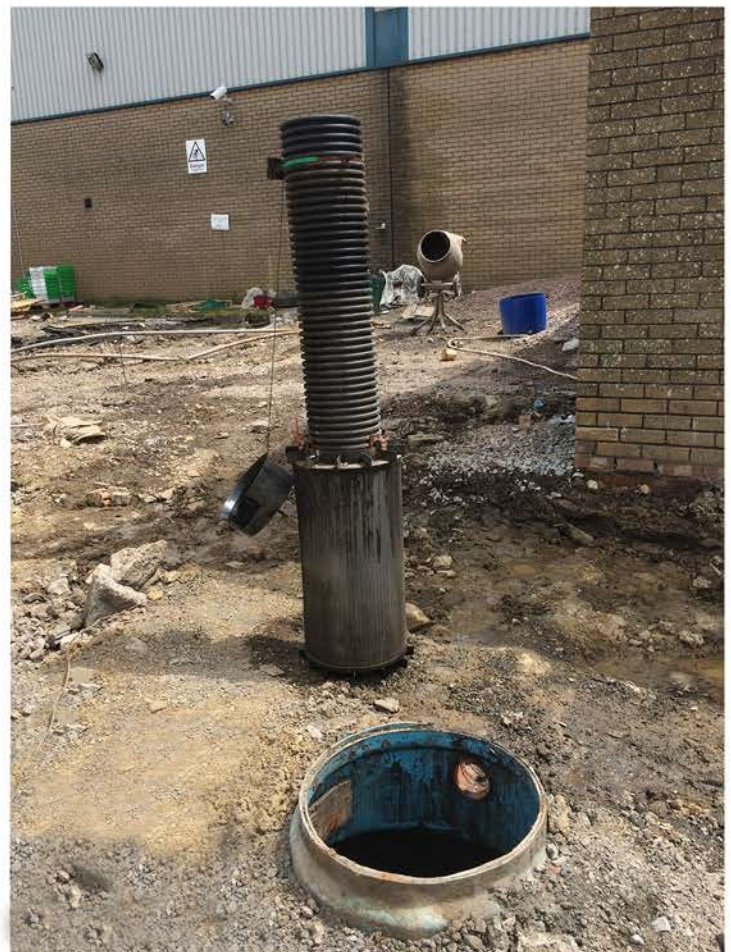
Our client, a major construction company, were in the process of converting an office block into a healthcare facility. The catchment area was remaining the same size however a larger oil tank was being installed to replace the existing one.

As part of the scope of works the existing interceptor was due to be removed and replaced, however the client asked us to undertake an assessment into the functionality and suitability of the system before removing the interceptor.

We found that the interceptor was a sufficient size and suitable class of interceptor for the future usage of the site.

There was some damage to the coalescer which meant the interceptor was not fully functioning, however we were able to repair this defect during the service to return the interceptor back to a fully functional system.

The client was able to keep the interceptor and saved a substantial amount of money.







## Case Study 2

### **Specification: Inadequate Functionality: Fully Functional**

Our client was in the process of converting a site into a car dealership and wanted to know if the current interceptors were suitable and fully functioning. On inspecting the interceptors it was found that they were fully functioning however the interceptors installed were not fit for purpose.

The interceptors were Class 2 and installed in the surface water system, surface water interceptors must be Class 1. The interceptors were also too small for the catchment area they were servicing.

If the interceptors were specified correctly when they were initially installed they would still have been fit for purpose, however they needed to be removed and replaced with larger class 1 systems.

## Case Study 3

### **Specification: Adequate Functionality: Broken**

During an ISO 14001 audit it was flagged up that the interceptors on site were not being maintained. We were asked to inspect the interceptors to ensure that they were fully functioning and fit for purpose.

Although the interceptors were fit for purpose when they were installed a lack of maintenance meant they had developed irreparable issues.

The client were provided a report recommending the interceptors were removed and replaced, a proper maintenance regime would have cost a fraction of the cost of removing and replacing the interceptors.

